

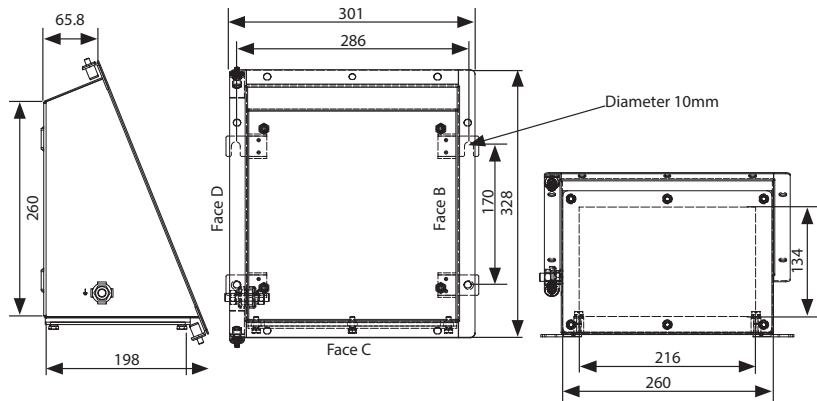
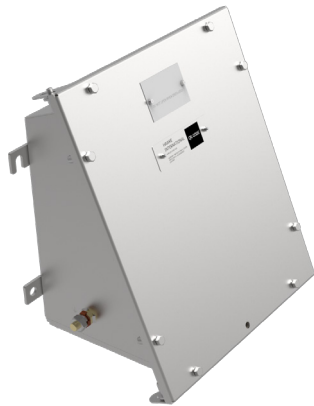


# EA262620

Increased Safety Exe Dual Certified ATEX/ IECEx



International Approvals



With its radical sloped face design and cut away sides, the globally certified EA2620 reduces cost through unparalleled installation and inspection speeds. The EA2620 is ideal for a variety of applications including; Oil and Gas, Pharmaceuticals, Renewables and Agriculture.

| Terminal Capacity |                                   |      |           |                  |                                |          |      |                                      |      |
|-------------------|-----------------------------------|------|-----------|------------------|--------------------------------|----------|------|--------------------------------------|------|
| Terminal Type     | Conductor Size (mm <sup>2</sup> ) |      | Max Volts | Rail Orientation | Max. Physical Terminal Content |          |      | Reduced Terminal Content at Max Amps |      |
|                   | Min.                              | Max. |           |                  | Terminal Qty                   | Rail Qty | Amps | Terminal Qty                         | Amps |
| WDU 2.5           | 0.5                               | 2.5  | 690       | V                | 64                             | 2        | 8    | 16                                   | 17   |
|                   |                                   |      |           | H                | 72                             | 2        | 8    |                                      |      |
| UT 2.5            | 0.14                              | 2.5  | 690       | V                | 64                             | 2        | 8    | 20                                   | 15   |
|                   |                                   |      |           | H                | 74                             | 2        | 7    |                                      |      |
| WDU 4             | 0.5                               | 4    | 690       | V                | 52                             | 2        | 12   | 15                                   | 22   |
|                   |                                   |      |           | H                | 60                             | 2        | 11   |                                      |      |
| UT 4              | 0.14                              | 4    | 690       | V                | 54                             | 2        | 11   | 18                                   | 20   |
|                   |                                   |      |           | H                | 62                             | 2        | 11   |                                      |      |
| WDU 6             | 0.5                               | 6    | 690       | V                | 40                             | 2        | 16   | 13                                   | 29   |
|                   |                                   |      |           | H                | 46                             | 2        | 15   |                                      |      |
| UT6               | 0.2                               | 6    | 690       | V                | 40                             | 2        | 16   | 13                                   | 28   |
|                   |                                   |      |           | H                | 46                             | 2        | 15   |                                      |      |
| WDU 10            | 1.5                               | 10   | 690       | V                | 32                             | 2        | 23   | 11                                   | 40   |
|                   |                                   |      |           | H                | 36                             | 2        | 22   |                                      |      |
| UT 10             | 0.5                               | 10   | 690       | V                | 32                             | 2        | 24   | 11                                   | 39   |
|                   |                                   |      |           | H                | 36                             | 2        | 22   |                                      |      |
| WDU 16            | 1.5                               | 16   | 690       | V                | 26                             | 2        | 31   | 9                                    | 53   |
|                   |                                   |      |           | H                | 30                             | 2        | 29   |                                      |      |
| UT 16             | 1.5                               | 16   | 690       | V                | 26                             | 2        | 31   | 9                                    | 53   |
|                   |                                   |      |           | H                | 30                             | 2        | 29   |                                      |      |
| WDU 35            | 2.5                               | 35   | 690       | V                | 18                             | 2        | 50   | 7                                    | 80   |
|                   |                                   |      |           | H                | 22                             | 2        | 45   |                                      |      |
| UT 35             | 1.5                               | 35   | 690       | V                | 20                             | 2        | 54   | 12                                   | 70   |
|                   |                                   |      |           | H                | 24                             | 2        | 50   |                                      |      |

\* Max terminals are split across the quantity of terminal rails

## FEATURES

- Enclosure Box size: 286 mm X 328 mm.
- The EA's innovative sloped lid design allows corrosion causing contaminants to naturally spill off.
- Cut away sides provide up to 55% extra space versus competitor enclosures, enabling increased hand access for faster installation.
- Amazing sealing performance is provided by a single piece gasket contained by the enclosure lid.
- All 9 EA sizes follow industry sizes, so you can easily switch out or retrofit your current Enclosure for our EA range.
- Internationally approved

### Technical Data

|                               |  |
|-------------------------------|--|
| Ingress Protection            | IP66 to IEC/EC 60529; Type 4X  |
| Deluge Protection             | DTS01  |
| Material                      | 316 Stainless Steel  |
| Service Temperature           | -60°C to +80°C   |
| Temperature Class and Ambient | T6 40°C as standard<br>Optional T5 with ambients up to 65°C<br>For additional options see technical data                             |
| <b>ATEX/IECEX</b>             |  |
| ATEX/IECEX Protection Class   | Ex II 2 GD Ex eb IIC Gb; Ex tb IIIC Db   |
| ATEX Certificate No           | Baseefa08ATEX0208X<br>Baseefa08ATEX0207U (ZEA)   |
| IECEX Certificate Number      | IECEX BAS 08.0065X<br>IECEX BAS 08.0064U (ZEA)   |
| Construction & Test Standards | IEC/EN 60079-0, IEC/EN 60079-7 and IEC/EN 60079-31   |
| Marine Approvals              | ABS: 17-LD1653735-PDA  |
| Additional Certifications     | EAC: RU C-GB.AA87.B.00430<br>Inmetro: IEx 16.0144X<br>PESO: P457339  |
| <b>CSA</b>                    |  |
| NEC Protection Class          | Class 1 Div 2 ABCD<br>Class I, Zone 1, AEx e IIC Gb<br>Zone 21, AEx tb IIIC T80°C Db   |
| CEC Protection Class          | Ex e IIC Gb<br>Ex tb IIIC T80°C Db   |
| c CSA us Certificate          | 70039997   |
| Construction & Test Standards | UL 50E, UL12.12.01, UL/CSA-C22.2 60079-0, UL/CSA-C22.2 60079-7,<br>UL/CSA-C22.2 60079-31, CSA-C22.2 No. 94-M91, CSA-C22.2 No. 14-M91 |

### Maximum Quantity of Entries Per Face

| Thread Size          | M16 | M20 | M25 | M32 | M40 | M50 | M63 | M75 |
|----------------------|-----|-----|-----|-----|-----|-----|-----|-----|
| Face B               | 22  | 13  | 9   | 5   | 3   | 2   | 1   | -   |
| Face C (Gland Plate) | 28  | 18  | 12  | 8   | 6   | 3   | -   | -   |
| Face D               | 17  | 10  | 6   | 4   | 2   | 2   | 1   | -   |

CAUTION: Entry quantities are calculated based on standard gland diameters. Entry quantity may be affected if using accessories (locknuts, washers etc) with large diameters.